



### WASTE MANAGEMENT

SCET principle is to keep the campus in pristine condition in order to provide a conducive environment for academic and non-academic interests.

All stakeholders follow good hygienic practices as well as a comprehensive waste management plan. The core concern is to reduce, reuse and recycle wastes generated in the campus.

The college has different dustbins for different types of waste, such as biodegradable, recyclable and non-degradable. Green, blue and red bins have been provided across the campus for the collection of solid waste generated at different sources in the college.

Organic waste is disposed off in compost pits and processed and reused as manure for the plants and trees inside the campus.

Plastic usage is prohibited on campus so as to create a plastic-free zone. For liquid waste management, the water transport system is inspected for leaks in pipes, taps, valves and other components on a regular basis and promptly repaired.

To ensure a clean and safe potable water supply, a reverse osmosis plant with a capacity of 5000 liters of water is in operation in the main block and in the library.

The RO plant's rejected water is then used for plants.

The Physical Education department has a first aid medical kit, where students are more susceptible to minor injuries. The kit's waste such as cotton gauze and plaster are disposed along with non-degradable wastes.

All E-Wastes such as computer, its accessories and all electronic wastes are collected and discarded through the authorized vendor to ensure no hazard to the environment.

In the laboratories, hazardous chemicals and dyes are not used. Diluted acids are used in chemistry laboratories and are discharged directly.

When it is necessary to use a strong acid or base, it is neutralized before discharge. In the laboratory, no radioactive elements of any kind or form are used.

The college has well maintained and pollution free environment because of meticulously following the green and waste management systems.

PRINCIPAL  
Samskruti College of Engineering & Technology  
Kondapur, Ghatkesar Municipality, Medchal (D)

PRINCIPAL  
Samskruti College of Engineering & Technology  
Kondapur, Ghatkesar Municipality, Medchal (D)



**SAMSKRUTI COLLEGE OF ENGINEERING & TECHNOLOGY**  
(Approved by AICTE, New Delhi & Affiliated to JNTUH.)  
**Kondapur(V), Ghatkesar(M), Medchal(Dist)**



**Clean Campus initiatives policies :**

SCET had pledged to actively coordinate cleanliness activities in the college and beyond the campus in accordance with the vision of **Swatch Bharat Abhiyan** .

**The broad vision is as follows :**

- Conduct workshops on the 3-R's : Reduce , Reuse , Recycle of waste
- Remove all kind of waste material equipment like broken furniture etc.
- Generating mass awareness on cleanliness and hygiene amongst students & Staff
- Activities under '**Swatch Bharat Abhiyan**' will be key component of all the work done by our college
- Staff members will be encouraged to participate in the cleanliness drive.
- Rallies on themes connected with '**Swatch Bharat Abhiyan**' in and around the college campus will be conducted to create mass awareness.
- Administer of the pledge by students and staff members to maintain cleanliness of the college campus and its surrounding areas on an annual basis.
- Use more readout material in soft form. Reduce the hard readout material. Use more of e-mail for officially communicating the information needed, online reading etc.

**“Earth provides enough to satisfy every man’s need, but not every man’s greed”**

**- Mahatma Gandhi**

Institute will make all the necessary efforts to involve the students, faculty and staff in **“WASTE MANGEMENT”** by designating the volunteers, printing T-shirts/ Caps with green campus initiative slogan specially designed for the purpose.

  
PRINCIPAL

Samskruti College of Engineering & Technology  
Kondapur, Ghatkesar Municipality, Medchal (D)

  
PRINCIPAL  
PRINCIPAL

Samskruti College of Engineering & Technoic  
Kondapur, Ghatkesar Municipality, Medchal (D)



**Date: 01-06-2023**

## **CIRCULAR**

World Environment Day, held annually on 5 June, brings together millions of people from across the globe, engaging them in the effort to protect and restore the Earth.

World Environment Day is a global platform for inspiring positive change. People from more than 150 countries participate in this United Nations international day, which celebrates environmental action and the power of governments, businesses and individuals to create a more sustainable world.

In the view of above the principal and management have taken the initiation and decided to take an action against the usage of plastic in the campus and gave awareness to the adverse effects of usage of plastic in the college. So, I request the entire department Faculties and Students to cooperate us to actively contribute to the efforts of banning the use of plastic.

  
**PRINCIPAL**

PRINCIPAL  
Samskruti College of Engineering & Technology  
Kondapur, Ghatkesar Municipality, Medchal (D)

**CC :**

- 1.Hon'ble chairman/Secretary**
- 2.Principal's office**
- 3.Hod's**
- 4.Notice Board.**



PRINCIPAL  
Samskruti College of Engineering & Technology  
Kondapur, Ghatkesar Municipality, Medchal (D)



**SOLID ( DRY & WET ) WASTE MANAGEMENT**



**Solid-waste management**, the collecting, treating, and disposing of solid material that is discarded because it has served its purpose or is no longer useful.

Improper disposal of municipal solid waste can create unsanitary conditions, and these conditions in turn can lead to pollution of the environment and to outbreaks of vector-borne disease. The tasks of solid-waste management present complex technical challenges. They also pose a wide variety of administrative, economic, and social problems that must be managed and solved.

**PRINCIPAL**  
Samskruti College of Engineering & Technology  
Kondapur, Ghatkesar Municipality, Medchal (D)

**PRINCIPAL**  
Samskruti College of Engineering & Technology  
Kondapur, Ghatkesar Municipality, Medchal (D)



**SAMSKRUTI COLLEGE OF ENGINEERING & TECHNOLOGY**  
(Approved by AICTE, New Delhi & Affiliated to JNTUH.)  
**Kondapur(V), Ghatkesar(M), Medchal(Dist)**



**e-WASTE MANAGEMENT** : The major E-waste includes desktop computers; UPS's, laptops, LCD and TFT monitors, and stabilizers are the most widely generated and stored properly.

Reuse of components in mini projects/major projects of students, and displayed in corridors and laboratories for demonstration.

The e-wastes like computers, keyboards, mouse etc. are collected and are disposed to the scrap dealer based upon the highest bidding.

**PRINCIPAL**  
Samskruti College of Engineering & Technology  
Kondapur, Ghatkesar Municipality, Medchal (D)

**PRINCIPAL**  
Samskruti College of Engineering & Technology  
Kondapur, Ghatkesar Municipality, Medchal (D)

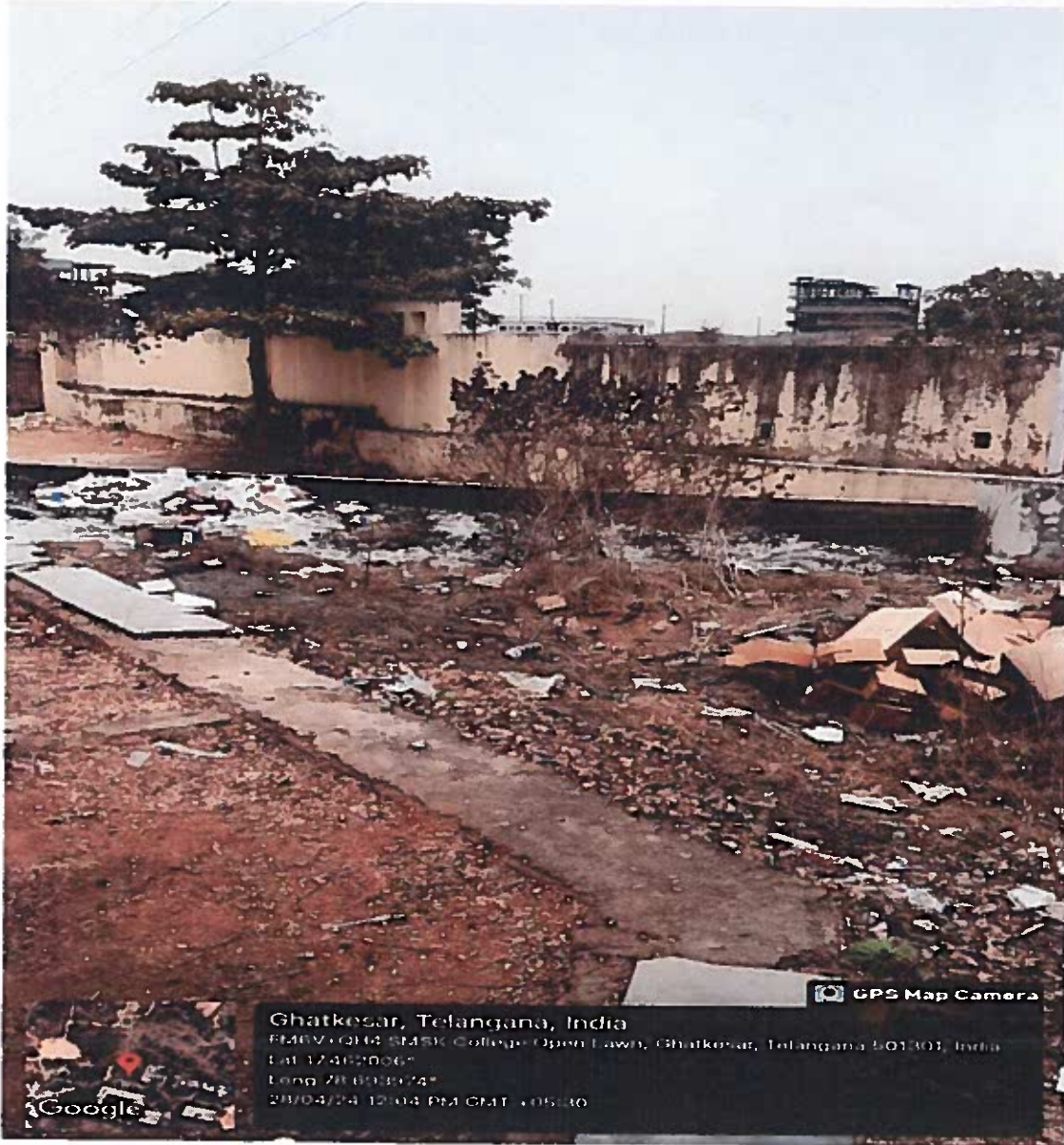


**SAMSKRUTI COLLEGE OF ENGINEERING & TECHNOLOGY**  
(Approved by AICTE, New Delhi & Affiliated to JNTUH.)  
**Kondapur(V), Ghatkesar(M), Medchal(Dist)**



**PRINCIPAL**  
Samskruti College of Engineering & Technology  
Kondapur, Ghatkesar Municipality, Medchal (D)

**PRINCIPAL**  
Samskruti College of Engineering & Technology  
Kondapur, Ghatkesar Municipality, Medchal (D)



**DUMPING YARD**

  
**PRINCIPAL**

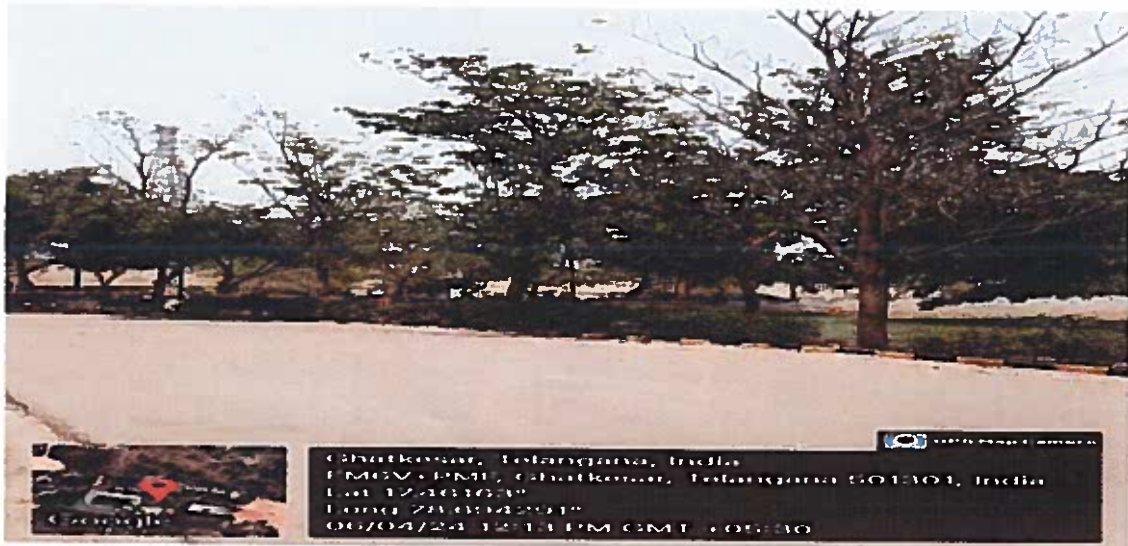
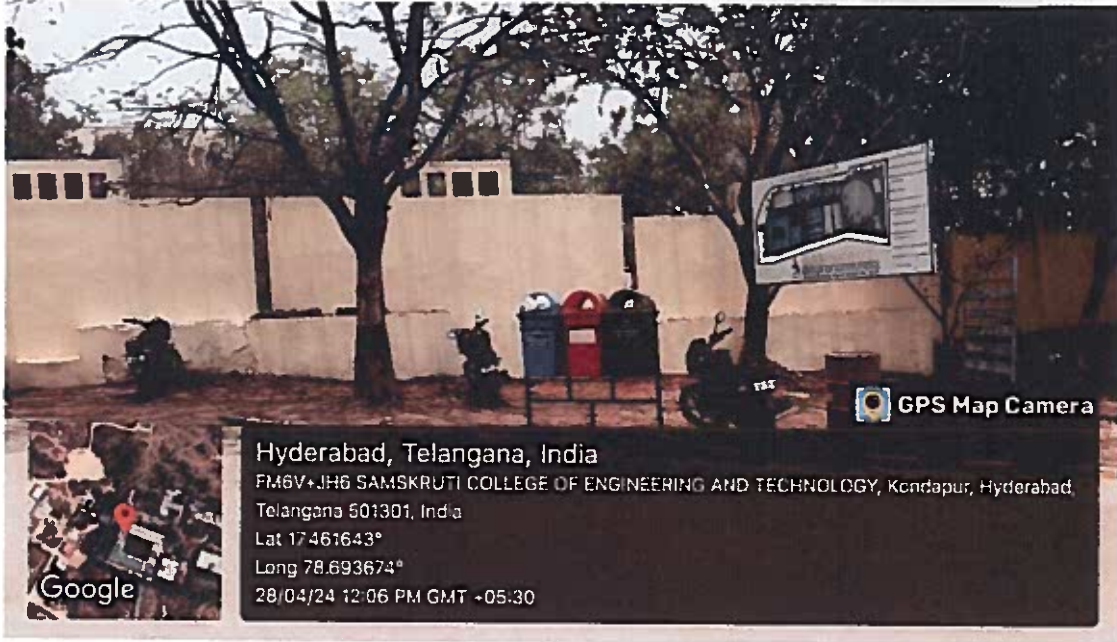
**PRINCIPAL**  
Samskruti College of Engineering & Technology  
Kondapur, Ghatkesar Municipality, Medchal (D)

  
**PRINCIPAL**

**Samskruti College of Engineering & Technology**  
Kondapur, Ghatkesar Municipality, Medchal (D)




**SAMSKRUTI COLLEGE OF ENGINEERING & TECHNOLOGY**  
 (Approved by AICTE, New Delhi & Affiliated to JNTUH.)  
 Kondapur(V), Ghatkesar(M), Medchal(Dist)



**Restricted Entry of Vehicles, Landscape for Green Environment**

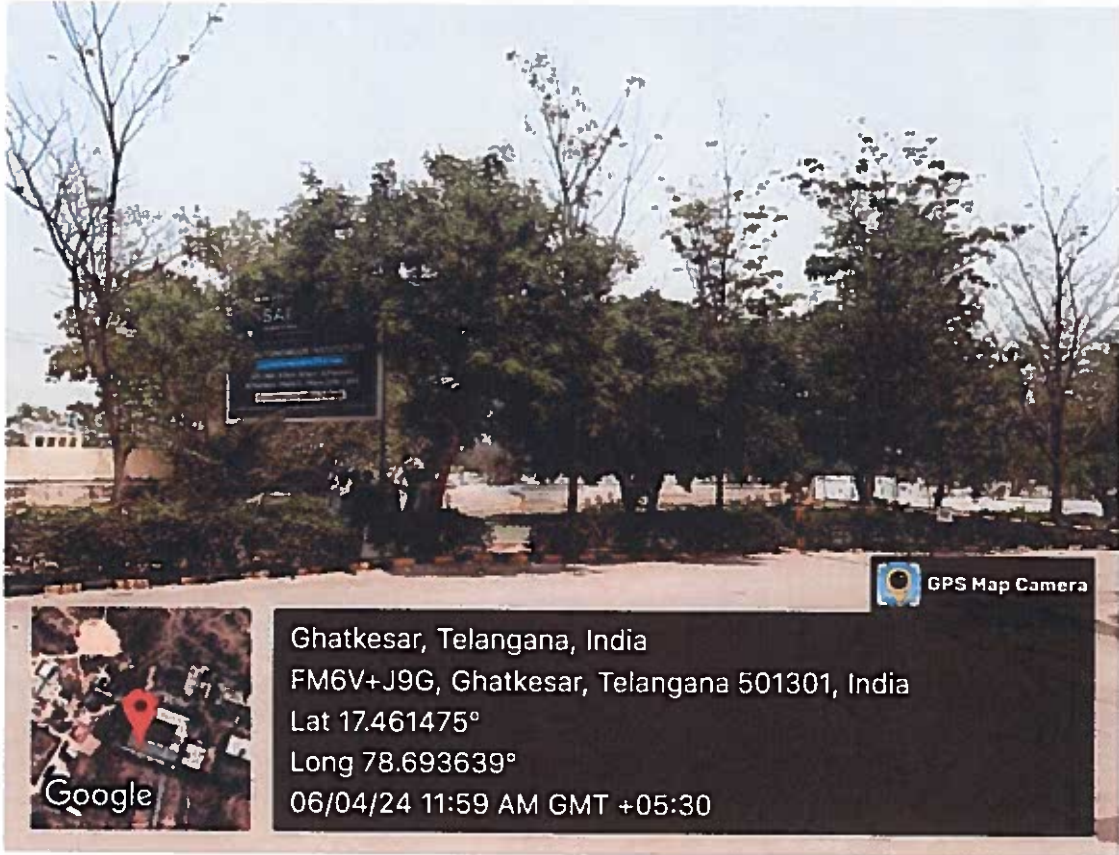
  
 PRINCIPAL  
 Samskruti College of Engineering & Technology  
 Kondapur, Ghatkesar Municipality, Medchal (D)

  
 PRINCIPAL  
 Samskruti College of Engineering & Technology  
 Kondapur, Ghatkesar Municipality, Medchal (D)





**SAMSKRUTI COLLEGE OF ENGINEERING & TECHNOLOGY**  
(Approved by AICTE, New Delhi & Affiliated to JNTUH.)  
**Kondapur(V), Ghatkesar(M), Medchal(Dist)**



**Landscaping & Clean campus initiatives**

**PRINCIPAL**  
**PRINCIPAL**

Samskruti College of Engineering & Technology  
Kondapur, Ghatkesar Municipality, Medchal (D)

**Samskruti College of Engineering & Technology**  
**Kondapur, Ghatkesar Municipality, Medchal (D)**